

H2500-Hybrid Aluminum Tracker

The new innovative aluminum system HELIOS 2500 offers the sun's tracking function based on the innovative motion of "flexible geometry structure". The light weight system, which is constructed by aluminum, combines the advantages of traditional tracking systems and at the same time the reliability and flexibility of fixed structure. Because of the above hybrid design the Helios 2500 is an excellent "value for money" approach for solar projects. The tracker movement is guided by a Programmable Logic Controller using astronomical data.

- Average efficiency increase more than 30%
- Cost saving more than 50% comparing to traditional tracking systems
- Light and "easy handling" structure.
- Fast and easy installation
- Pre-assembled
- Calculated with finite element analysis based on Eurocode standards
- Appropriate for all the types of panels (max dim 1700x1000)
- Low energy self-consumption
- Minimum service maintenance requirements.



Materials

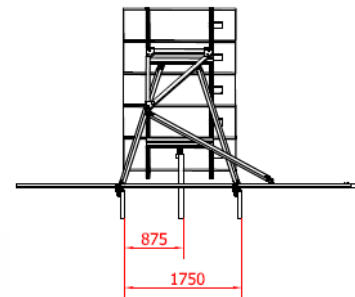
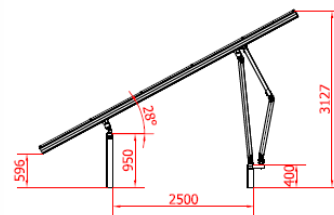
- Aluminum Alloy 6005T6
- Inox Screws

General characteristics

- Series: H2500
- Type: Hybrid double axis
- Application: Free field
- Alignment: Landscape
- Azimuth spinning: -90° to $+90^{\circ}$
- Inclination: 25° - 30°
- Foundation: combination of piles and concrete
- Control system: PLC with standard backtracking & high wind speed protection
- Power per tracker: 1,25kW
- Energy consumption: 120W per 75 PV modules

Certification

- Static Analysis According Eurocodes 1,3,9
- ISO 9001 / ISO 14001
- Technical Manual
- Alumil 20 Year Guarantee



PRODUCT ACCESSORIES

Motion System Accessories

EX-8969608000	CONTROL BOX WITH WIND METERING DEVICE - UP TO 8 SERIES
EX-8969616000	CONTROL BOX WITH WIND METERING DEVICE - UP TO 16 SERIES
EX-8969600100	ELECTRICAL BOX WITH POSITIONING SENSOR DEVICE
EX-8969800100	MOTION BOX
EX-5001801400	MOTOR TRIF 0,18KW 1400 63 B5
EX-5000414000	ORTHOGONAL REDUCTOR WMI 40 1/40 63 B5 D 18MM
EX-5000404100	FLANGE UMI 40FA (WITH OBRROUND HOLES)
EX-8969002200	MOTION SYSTEM BASE (WITH OBRROUND HOLE)
EX-8960740040	MOTION SYSTEM BASE (WITH CIRCULAR HOLE)

Tracker Accessories

EX-8962510100	TRACKER'S ASSEMBLY KIT
EX-8962508100	ACTUATOR BEAM
EX-8962508400	ACTUATOR BEAM H2508_L=1500mm
EX-8962500210	SYNTHETIC BALL-BEARING FOR JOINTS
EX-8962503301	JOINT CONNECTOR
EX-7201999200	BUTYL TAPE 100mmX0.6mm
EX-8961241500	HOT DIP GALVANIZED PILE IPE120_L=1,5m
EX-8961242000	HOT DIP GALVANIZED PILE IPE120_L=2,0m
EX-8962500320	PILE'S ACCESSORIES
EX-8960180200	CLAMP
EX-8960660000	CAP OF PANEL CLAMP WITH 55mm LENGTH
EX-8960XX0100	END CLAMP XXmm, L=55mm - depends on panel thickness

Bolts & Nuts

EX-7629085001	HEX SOCKET SCREW ISO4762 M8x50 A2 INOX
EX-7628200801	SQUARE NUT DIN562 M8 A2 INOX
EX-7627300801	SERRATED LOCK WASHER DIN6798-A M8 A2 INOX
EX-7922167001	HEXAGON BOLT ISO4017/DIN933 M16x70 A2 INOX
EX-7628016101	HEXAGON NUT M16 INOX