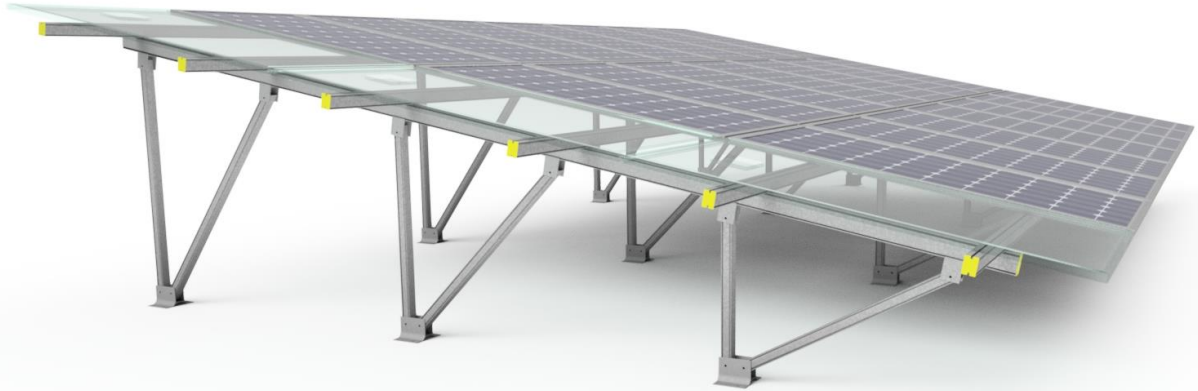


AS161 - H2100 HELIOS Flat Roof



Materials

- Aluminum Alloy 6005
- Inox A2 Screws

Technical characteristics

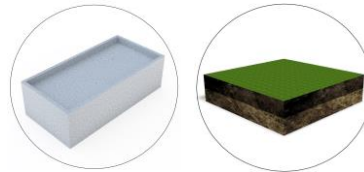
- Series: H2100
- Type: AS161
- Application: Free field & flat roof
- Alignment: Portrait
- Inclination: According to project design
- Foundation: Pile ramming or concrete blocks or combination
- Lower PV module distance from the ground: 55cm

Certification

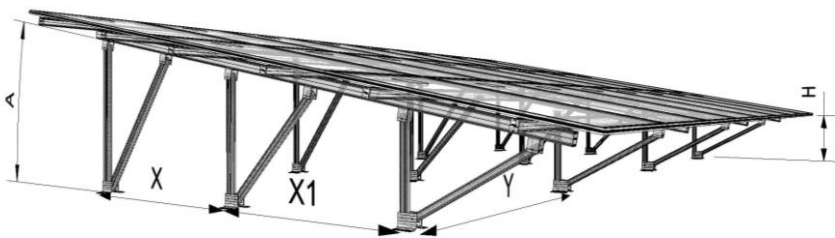
- Static Analysis According Eurocodes 1,3,9
- ISO 9001 / ISO 14001 / ISO 50001
- CE
- Technical Manual
- Alumil 20 Year Guarantee

H2100-161 is an aluminum structure solution for 3 panels portrait. The system is provided with all needed clamps, connection base plates (to concrete blocks or steel piles) and stainless-steel assembly screws in preassembled package. The inclination is 10°.

- ✓ Custom made solution
- ✓ Quick installation
- ✓ Light weight mounting system



TECHNICAL DETAILS



Profile	H2060
W = width (mm)	52
H = Height (mm)	60
Weight (kg/m)	1,486
Lengths (m)	2.2 / 2.4 / 3.15 / 3.3 / 3.6 / 4.2 / 4.4 / 4.7 / 6.2 / 6.5 / 7.0

