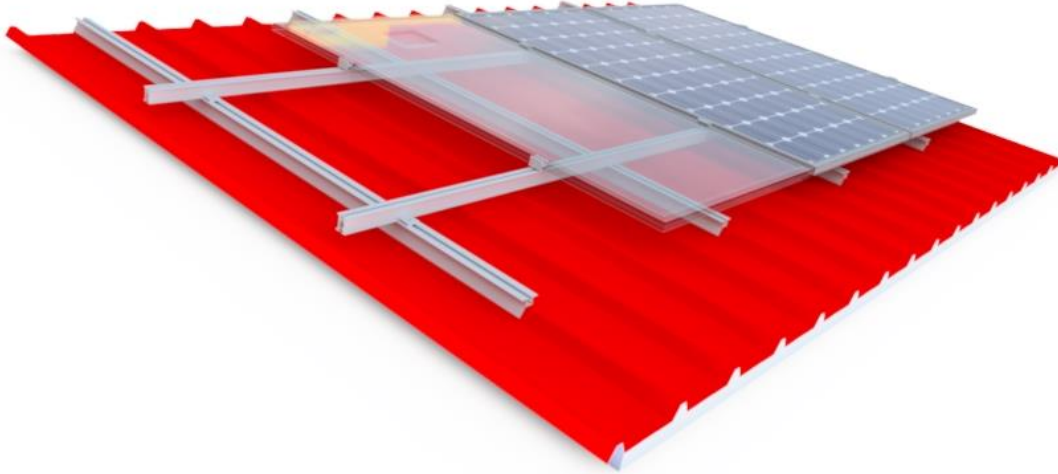


AS415P - H2400 HELIOS Industrial Roof



Materials

- Aluminum Alloy 6005
- Inox A2 Screws

Technical characteristics

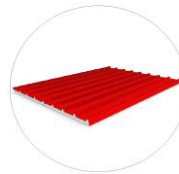
- Series: H2400
- Type: AS415P
- Application: Industrial Roof
- Alignment: Landscape
- Inclination: Tangent to the industrial roof
- Foundation: Self drilling rivets or self drilling screws

Certification

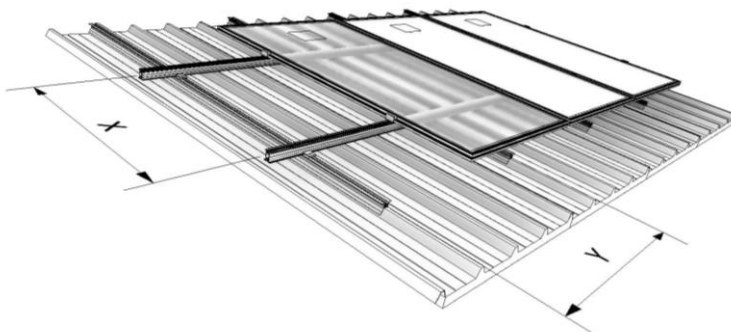
- Static Analysis According Eurocodes 1,3,9
- ISO 9001 / ISO 14001 / ISO 50001
- CE
- Technical Manual
- Alumil 20 Year Guarantee

Alumil, recognizing its installers' need for quick and safe structures, improved the PV mounting system on industrial roofs considerably, by offering an innovative solution bearing numerous advantages.

- ✓ Quick installation
- ✓ Light weight mounting system
- ✓ Adaption to various types of industrial roofs
- ✓ Due to the dimensions of the profile, panels are better ventilated; as a result, the installation performs better in high temperatures



TECHNICAL DETAILS



| Profile | H2409 | H2216 |
|-----------------|------------------------|--|
| W = width (mm) | 60 | 40 |
| H = Height (mm) | 53,6 | 50 |
| Weight (kg/m) | 1,064 | 1,071 |
| Lengths (m) | 2,1 / 3,15 / 4,2 / 6,2 | 2,2 / 2,4 / 3,15 / 3,3 / 3,6 / 4,2 / 4,4 / 4,7 / 6,2 / 6,5 / 7,0 |

