



Alumil
SOLAR

HELIOS 2700 - SOLAR CARPORT

HELIOS 2700 - SOLAR CARPORT



Materials

- Anodized Aluminium Alloy 6005
- Inox A2 screws
- Steel column & beam of 6 mm thickness

Technical characteristics

- Product line: H2700
- Type: CARPORT
- Application: Outdoor parking areas
- Standard alignment: 4 Panels/landscape
- Standard Inclination: 6°
- Foundation: Reinforced concrete
- Appropriate panel width: 1130 mm – 1140 mm
- Electrostatic painting of steel
- Snow load: up to 100 kg/m²
- Wind speed: up to 120 km/h

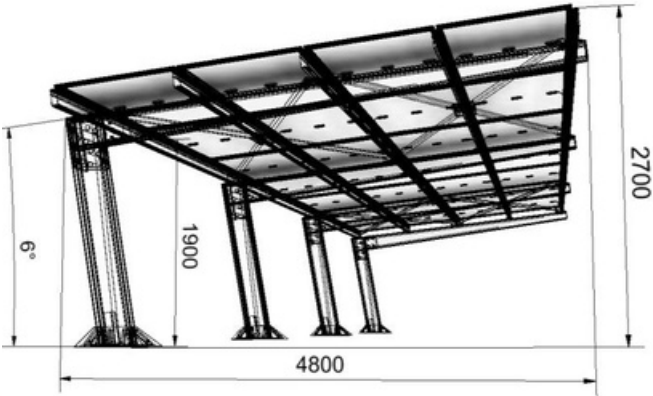
Certification

- Static Analysis According to Eurocodes 3,9 & CFD Analysis
- ISO 9001 / ISO 14001 / ISO 50001
- CE
- Technical Manual

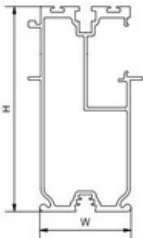
Sturdy construction with premium design

- Making use of outdoor parking spaces to generate eco-friendly energy.
- A unique design that ensures seamless and secure vehicle entry and exit.
- Waterproof design.
- Efficiently shielding vehicles from sun or rain while providing strong resistance to heavy snowfall.
- Ability to install LED lighting with concealed wiring.
- Expendable structure to cover large parking areas.
- Cable management solution.
- Quick installation.

TECHNICAL DETAILS



Profile	H2704
W = width (mm)	62,6
H = Height (mm)	141
Weight (kg/m)	3,84
Lengths (m)	Engineered to order



HEAD OFFICES & SHOWROOM

THESSALONIKI
GOGOUSI 8, EFKARPIA
THESSALONIKI - GR 564 29
TEL.: +30 2313 011000
E-MAIL: info@alumil.com

HEADQUARTERS - FACTORY

KILKIS INDUSTRIAL AREA
KILKIS - GR 61100
TEL.: +30 23410 79300
E-MAIL: info@alumil.com



www.alumilsolar.com