

## AS250- H2200 HELIOS Tile Roof



### Materials

- Aluminum Alloy 6005
- Inox A2 Screws

### Technical characteristics

- Series: H2200
- Type: AS250
- Application: Tile roof
- Alignment: Portrait-Landscape
- Inclination: Tangent to the tile roof
- Foundation: Hooks or hanger bolts

### Certification

- Static Analysis According Eurocodes 1,3,9
- ISO 9001 / ISO 14001 / ISO 50001
- CE
- Technical Manual
- Alumil 20 Year Guarantee

**H2200** roof series offer the possibility for easy assembly by achieving large spans (up to 1,8m) between the mounting points.

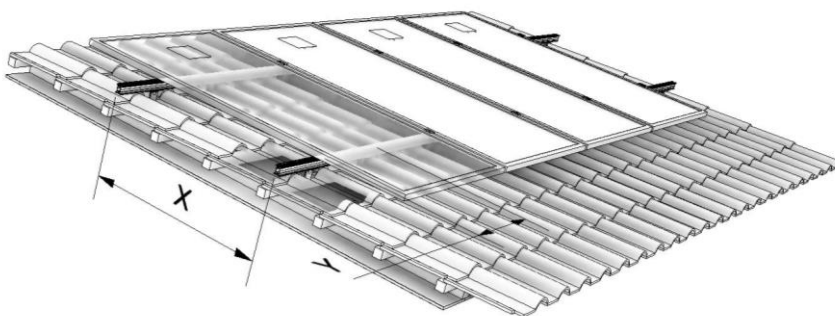
Depending on the requirements of each project, our structures can be adjusted in 3 dimensions, and fit in various types of tile (eg, Roman, Dutch).

PV modules can be placed either in portrait or landscape position for maximum roof coverage.

- ✓ Pre-assembled materials
- ✓ Quick installation
- ✓ Light weight mounting system



### TECHNICAL DETAILS



Profile	H2216
W = width (mm)	40
H = Height (mm)	50
Weight (kg/m)	1,071
Lengths (m)	2.4 / 2.75 / 3.6 / 4.2 / 4.7 / 5.9

