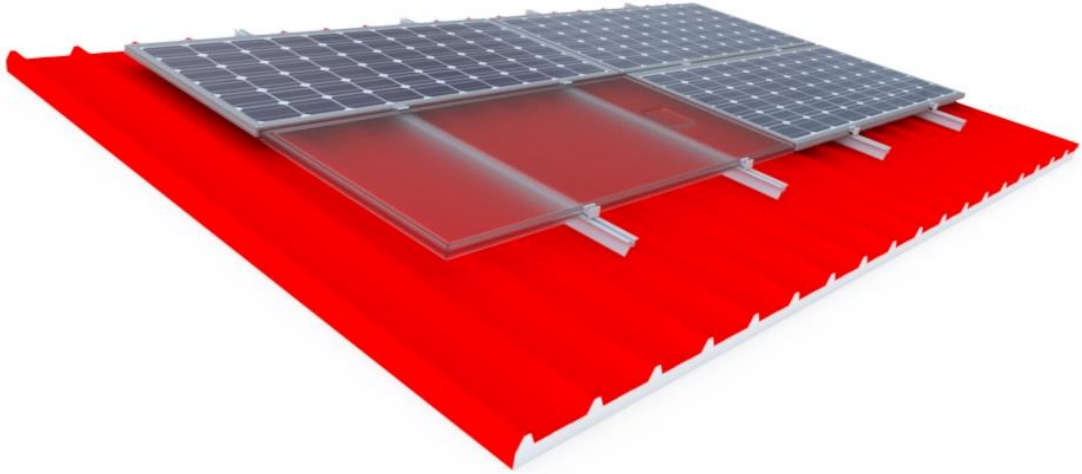


## AS415L - H2400 HELIOS Industrial Roof



### Materials

- Aluminum Alloy 6005
- Inox A2 Screws

### Technical characteristics

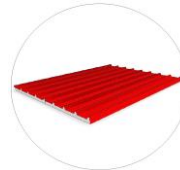
- Series: H2400
- Type: AS415L
- Application: Industrial Roof
- Alignment: Landscape
- Inclination: Tangent to the industrial roof
- Foundation: Self drilling rivets or self drilling screws

### Certification

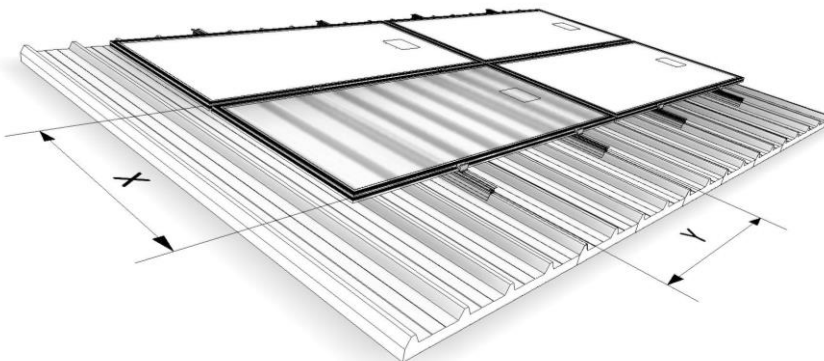
- Static Analysis According Eurocodes 1,3,9
- ISO 9001 / ISO 14001 / ISO 50001
- CE
- Technical Manual
- Alumil 20 Year Guarantee

**Alumil**, recognizing its installers' need for quick and safe structures, improved the PV mounting system on industrial roofs considerably, by offering an innovative solution bearing numerous advantages.

- ✓ Quick installation
- ✓ Light weight mounting system
- ✓ Adaption to various types of industrial roofs



### TECHNICAL DETAILS



Profile	H2409
W = width (mm)	60
H = Height (mm)	53,6
Weight (kg/m)	1,064
Lengths (m)	2,75 / 3,6 / 4,7 / 5,9

