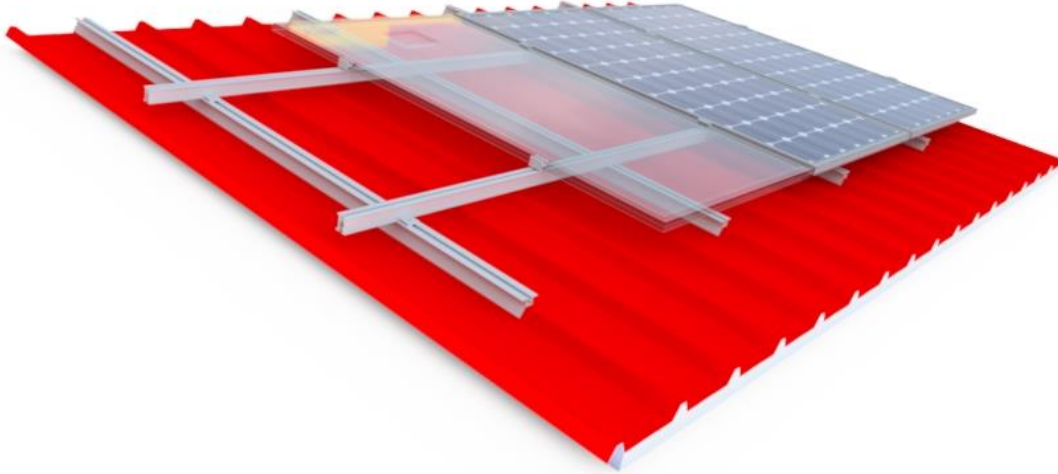


# AS415P - H2400 HELIOS Industrial Roof



## Materials

- Aluminum Alloy 6005
- Inox A2 Screws

## Technical characteristics

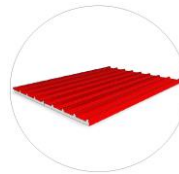
- Series: H2400
- Type: AS415P
- Application: Industrial Roof
- Alignment: Landscape
- Inclination: Tangent to the industrial roof
- Foundation: Self drilling rivets or self drilling screws

## Certification

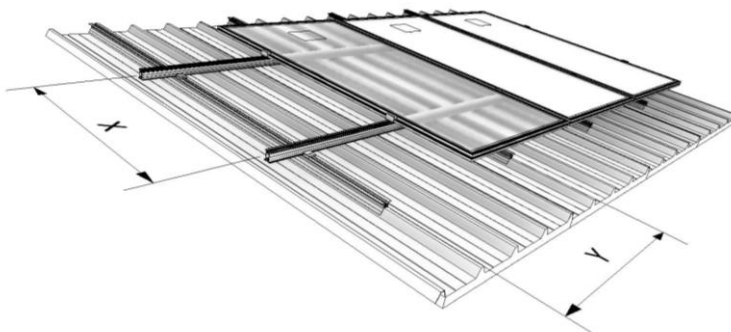
- Static Analysis According Eurocodes 1,3,9
- ISO 9001 / ISO 14001 / ISO 50001
- CE
- Technical Manual
- Alumil 20 Year Guarantee

**Alumil**, recognizing its installers' need for quick and safe structures, improved the PV mounting system on industrial roofs considerably, by offering an innovative solution bearing numerous advantages.

- ✓ Quick installation
- ✓ Light weight mounting system
- ✓ Adaption to various types of industrial roofs
- ✓ Due to the dimensions of the profile, panels are better ventilated; as a result, the installation performs better in high temperatures



## TECHNICAL DETAILS



Profile	H2409	H2216
W = width (mm)	60	40
H = Height (mm)	53,6	50
Weight (kg/m)	1,064	1,071
Lengths (m)	2,75 / 3,6 / 4,7 / 5,9	2,4 / 2,75 / 3,6 / 4,2 / 4,7 / 5,9

